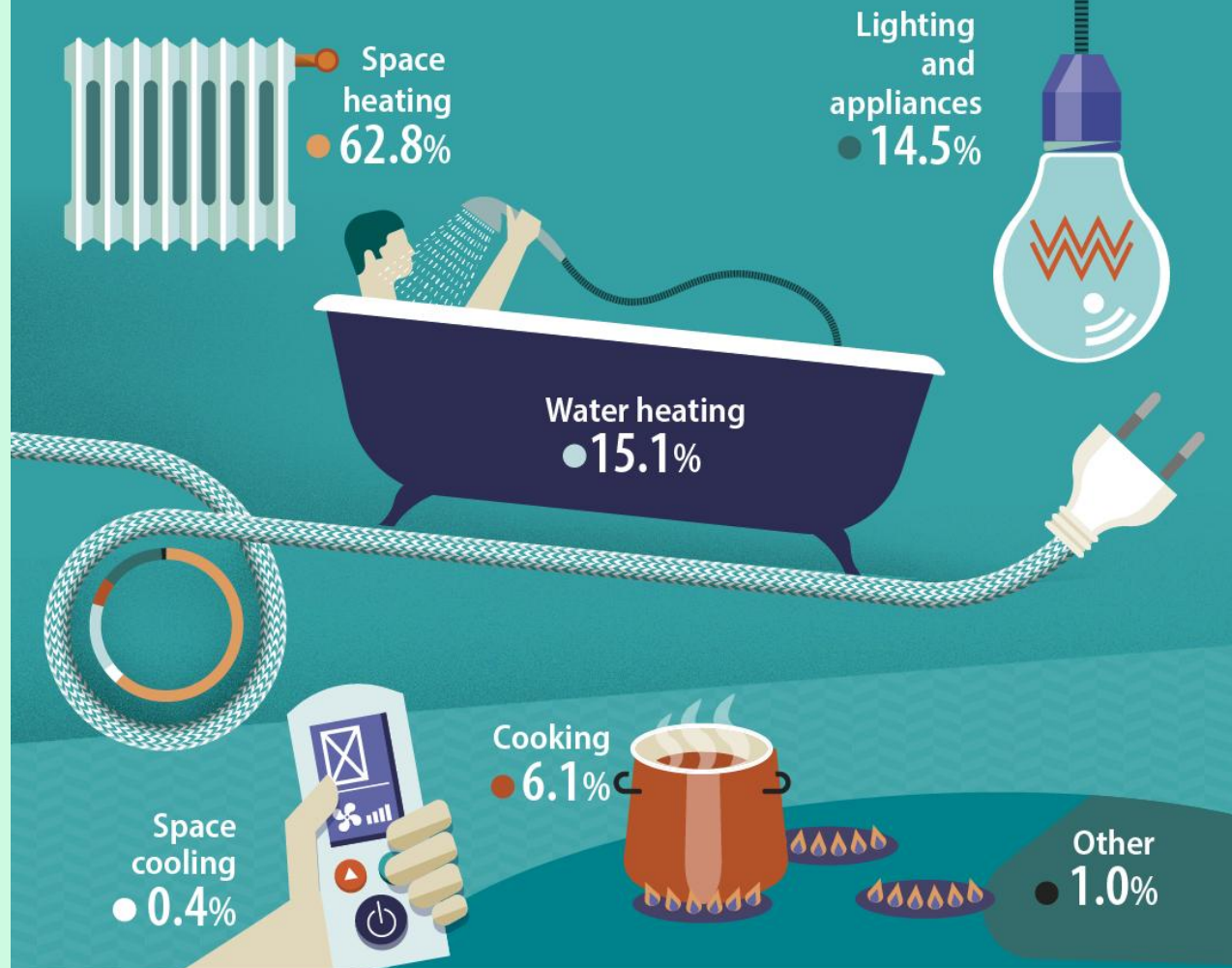


Signe Riemer-Sørensen

# Hvordan kan KI kan bidra til å redusere utslipp i industrielle systemer?

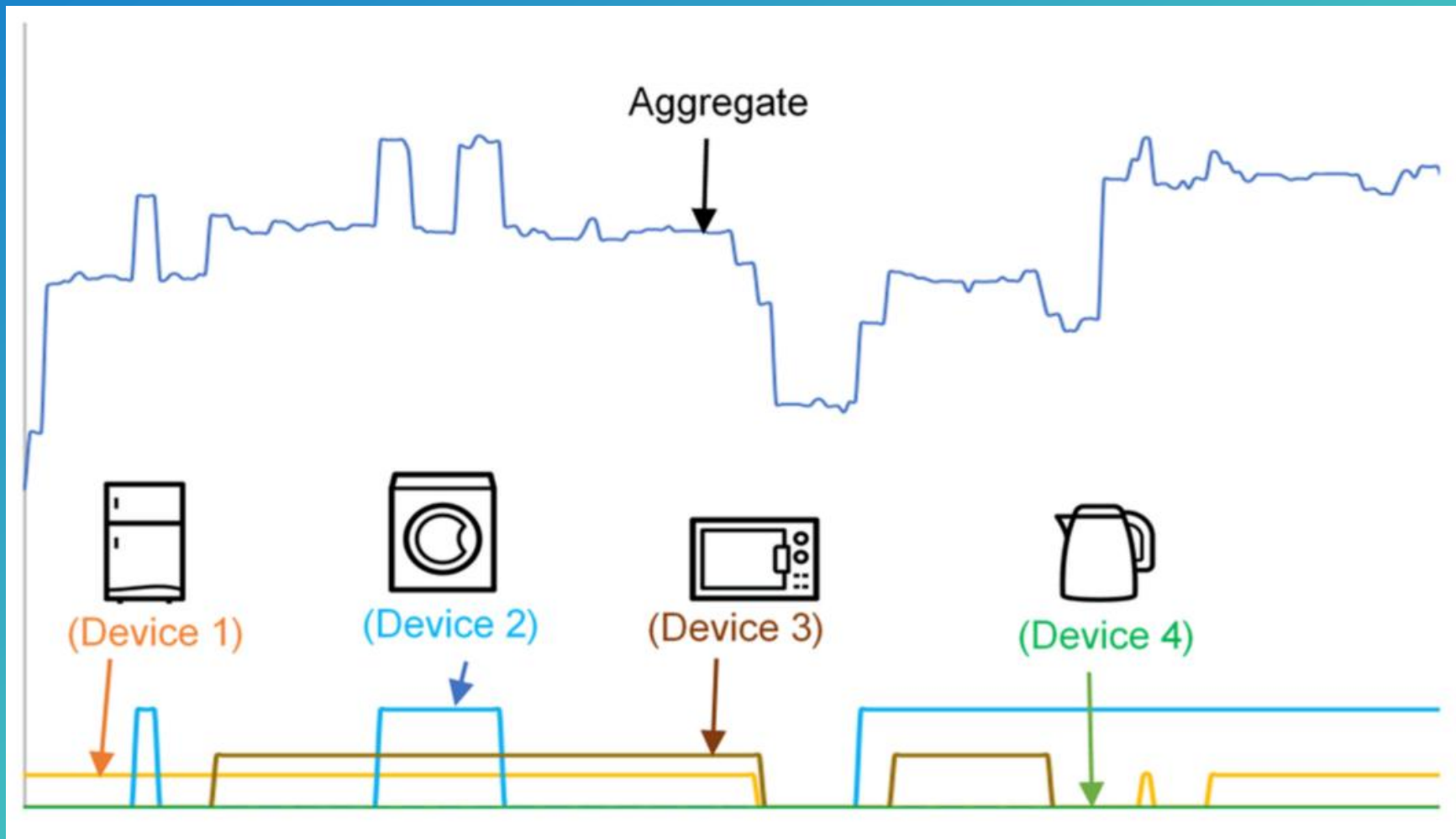


# Energy consumption in EU households (2020)



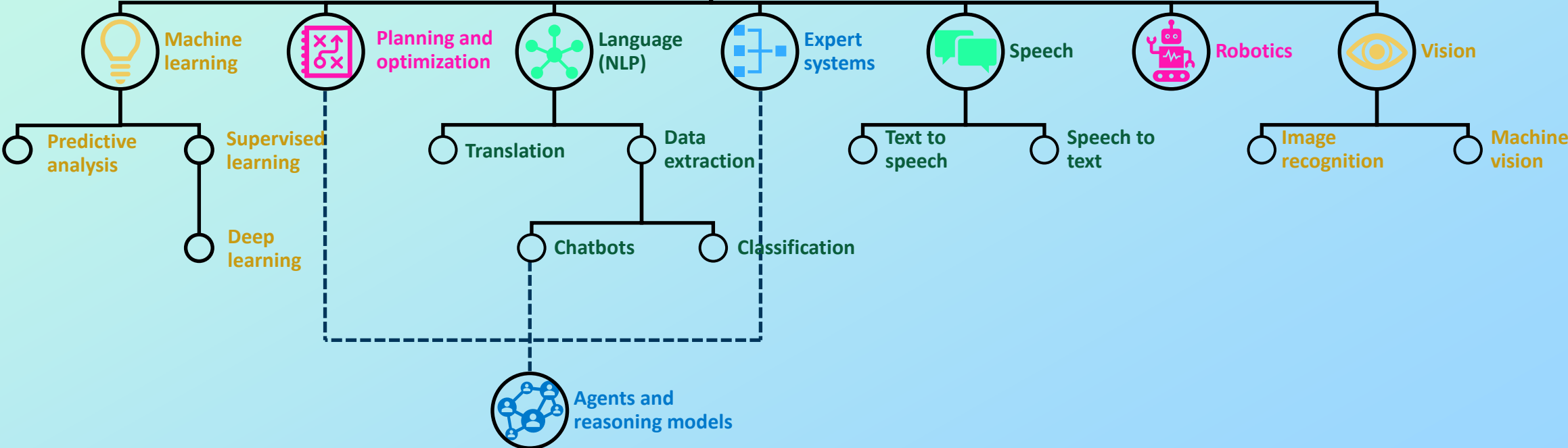
Energisløsning i kontorbygg

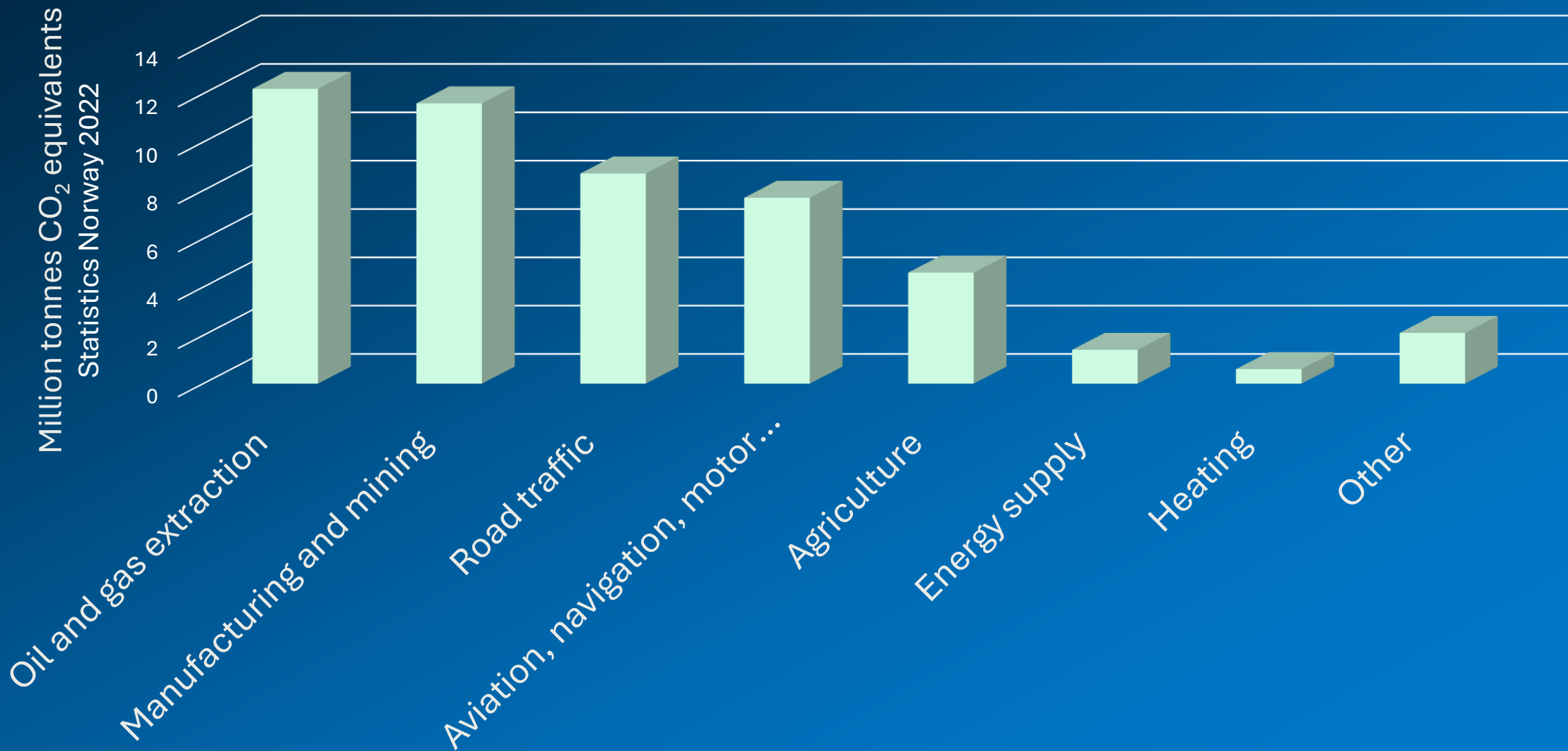
Innovasjonsprosjekt for næringslivet EntroInnova





# Artificial Intelligence







SINTEF

Reduser transport

Innovasjonsprosjekt for næringslivet  
Optimised Warehouse Logistics

SOLWR





Uforutsigbar fornybar energi

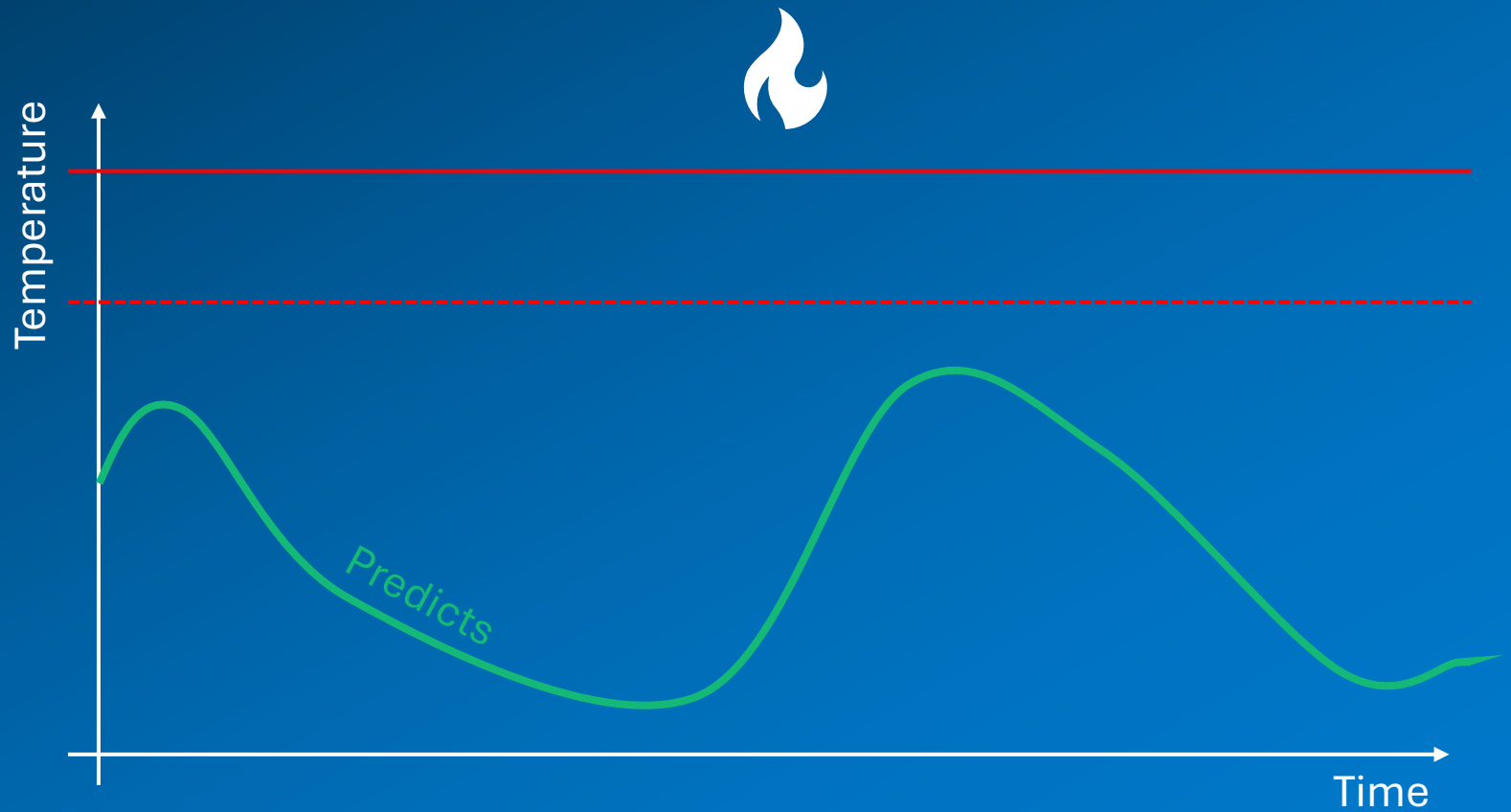
SFI NorwAI



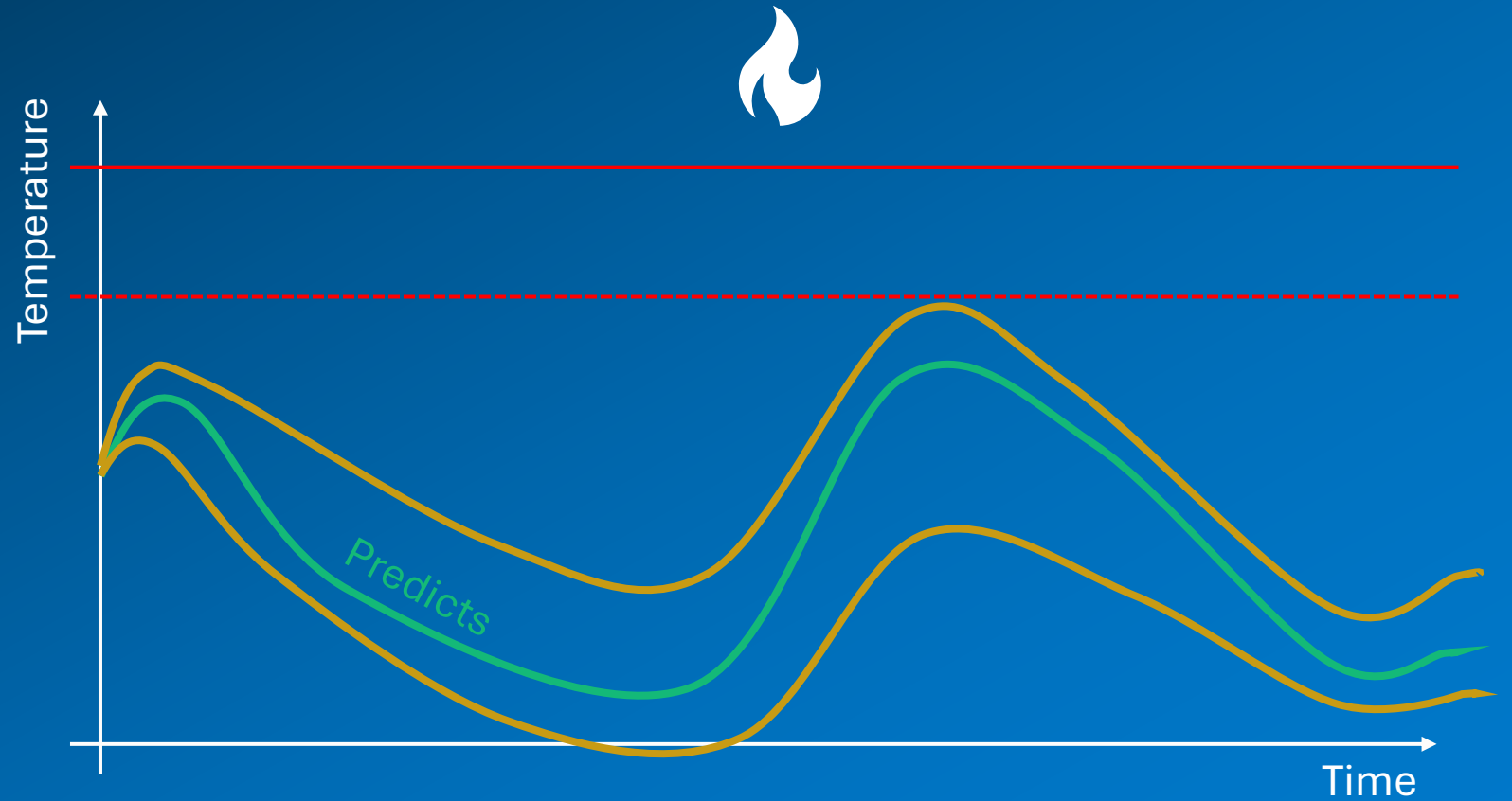
# Virkelighetens verden



# Transformer temperatur



# Transformer temperatur

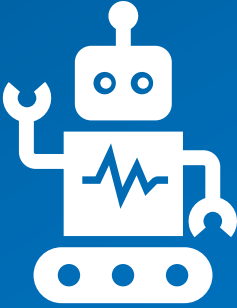
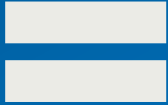
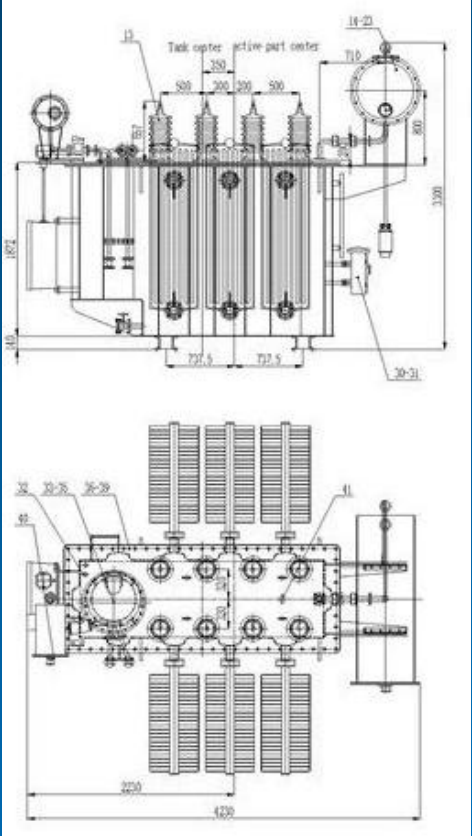


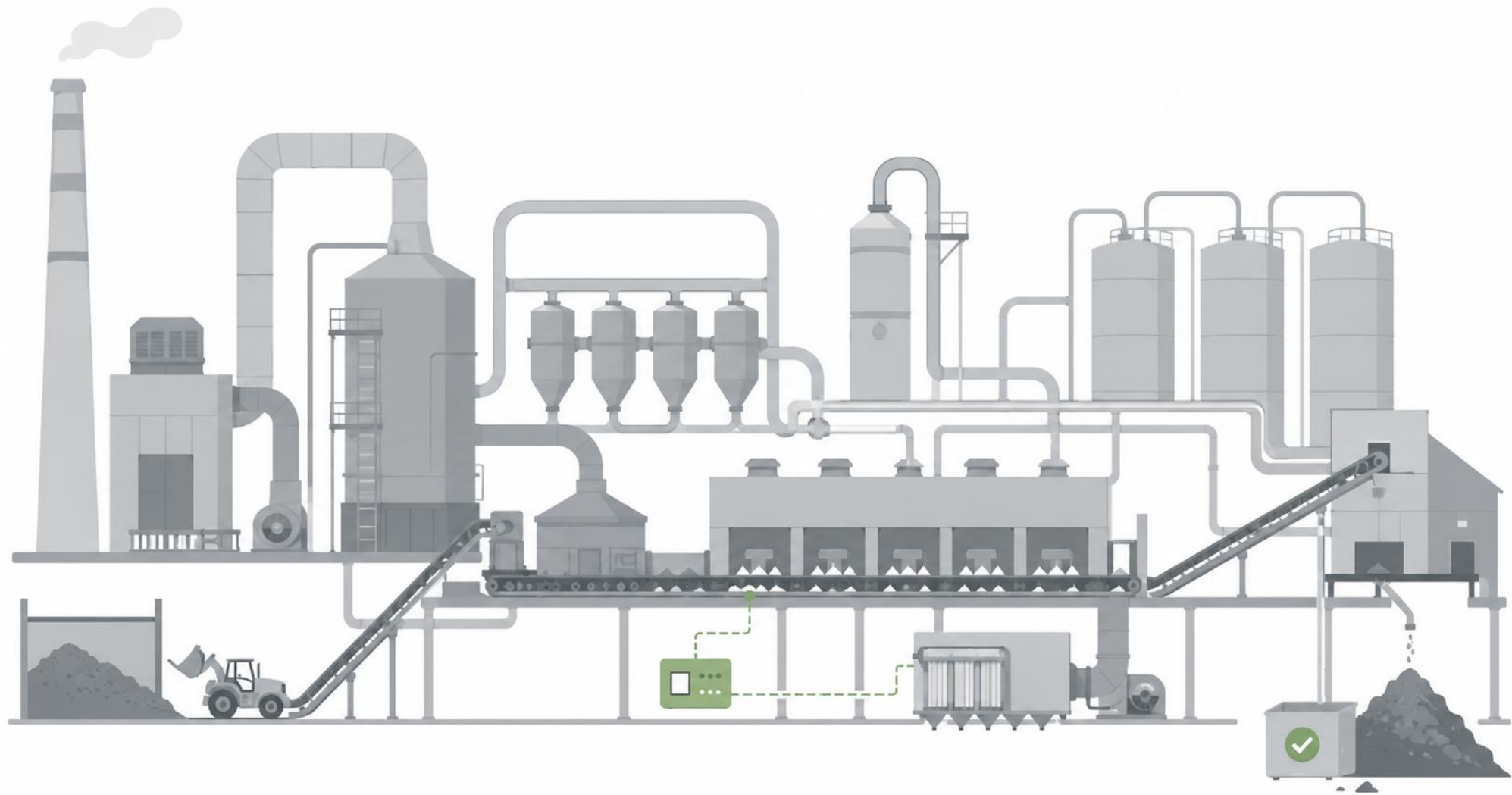
A composite image featuring a perspective view of a road or data path leading towards a glowing globe in the center. The scene is overlaid with a grid of blue lines and various digital icons like gears and lightbulbs. At the bottom center, there is a prominent circular icon containing the letters "AI". The background transitions from a bright yellow sun on the right to a deep blue sky on the left.

# Uten data ingen KI



# Hybrid KI





Signe Riemer-Sørensen

# Hvordan kan KI kan bidra til å redusere utslipp i industrielle systemer?

Signe Riemer-Sørensen

**Bruk KI der det betyr noe  
Bruk den mindste mulige  
KI sammen med kunnskap  
om den fysiske verden  
Og bruk den til å forbedre  
beslutninger — ikke bare  
til å lage prediksjoner**